

Sommerhus saunagulv 5 m² | Miehikkälä, Finland



Arbejdserklæring

The floor of the sauna in the summer cottage had already been tiled for some time. The old tiles were removed and the Finnish innovative, self-smoothing ElaProof FLOOR X floor covering was chosen as the new surface. After removing the tiles, the spills of the old concrete floor were repaired with UZIN products and after drying, the floor was treated with ElaProof Primer. The treatment improves the adhesion of ElaProof to the substrate and blocks the pores of the substrate. ElaProof FLOOR X was installed as a new floor coating according to the work instructions. The easy-care and finished surface was made with ELACOAT TopCoat RAL topcoat.

Mere information

A summer cottage built at the end of the 1960s, without electricity, which is cold in winter, where it was decided to renew the sauna floor. The sauna was last renovated in the early 2000s, when the painted concrete floor was tiled with ceramic tiles. In connection with the floor renovation, the brick chimney of the sauna was coated with ElaProof+SAND Wall coating.

Vareoplysninger

Kunde: Private summer cottage

Mål: Sauna floor of summer cottage

Adresse: Miehikkälä

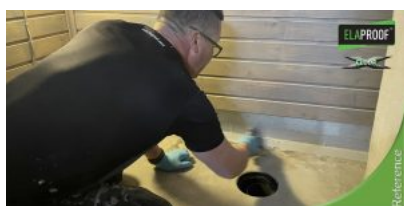
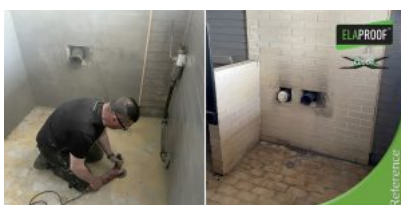
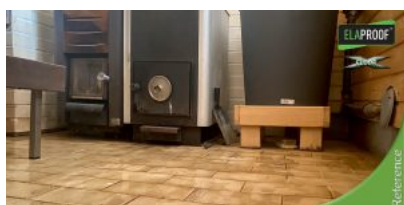
Materiale: concrete

Entreprenør: Build Care Oy, reference

Tid og sted: 06/2023 | Miehikkälä, Finland

Produkter brugt på destinationen

- [ElaProof Primer](#)
- [ElaProof FLOOR X](#)
- [ELACOAT TOPCOAT RAL](#)



Alle de oplysninger, der præsenteres ovenfor, er baseret på forskningsresultater, vores nuværende viden og erfaring. De fjerner ikke ansvaret for brugeren af produktet for at udføre sine egne tests og eksperimenter, så alle faktorer og forhold, der kan påvirke installationen og brugen af produkterne, bør tages i betragtning. Der kan ikke gives garantier vedrørende produktets egenskaber eller egnethed til specifikke formål baseret på disse oplysninger. Alle beskrivelser, tegninger, fotos, informationer, proportioner, portionsstørrelser, vægte osv. er vejledende. Vi er ikke ansvarlige, hvis produktet bruges i modstrid med instruktionerne her. Det er brugerens ansvar at teste produktets egnethed til brugsformålet. Vi er kun ansvarlige for kvaliteten af produktet og garanterer, at det vil bestå vores kritiske kvalitetskontrol. Produktinformation opdateres regelmæssigt, dog er det brugerens ansvar at indhente den seneste gyldige produktinformation, som kan findes på www.elaproof.dk. Vi forbeholder os retten til at foretage ændringer. © Build Care Oy